

ENJOY

A Safe and Relaxing Soak Spa
Right In Your Home

inside AMERICAN TUBS

American Tubs designs and manufactures a complete line of



premium quality walk-in Bathtubs, that are an ideal for people with limited mobility, Seniors, disable and people with pain such as arthritis, stress and other debilitating conditions. American Tubs inspiration behind the design of every walk in bathtubs is luxurious, safety and functionality. Our brand are made of fiberglass, and gel coat shells, manufactured utilizing premium materials, advanced methods and adherence to strict quality guidelines to create a durable, high gloss finish that is

Easy to clean. Before any Walk-in tub leaves our factory, we perform a variety of tests and careful inspection of the frame, gel coat finish, overall construction, and three specific water tests. Once the bath tub has passed all quality assurance points it is signed off by a quality assurance specialist and carefully packaged and shipped.

Four ways to order
Web: www.AmericanTubs.com
Phone: 626-581-3588
Fax: 626-587-4432
Mail: sales@americantubs.com
AmericanTubs.com
17940 Ajax Circle
City of Industry, CA 91748

ENJOY COMPLETE RELAXATION

Easy and Safe Access



Soaker bath are perfect to relax muscles and relieve pressure on nerves. It also boosts circulation and accelerates the body's natural healing process. It's used to promote relaxation, release accumulated stress, and gently stretch connective tissues. Hydro therapeutic massage is delivered in our walk in tub through an intricate and Powerful system of jets and or air massage system.

Our walk-in tubs are designed twice as deep or more as the normal bathtub, to give you that full body soak. The built-in seat providing a comfortable resting place and help you in and out of the tub. Fill up the tub with warm water and experience a effortless soothing comfort.

HIGHEST STANDARD
WALK IN SOAKER TUBS
AIR MASSAGE SYSTEMS
HYDRO MASSAGE SYSTEMS
DUAL MASSAGE SYSTEMS

Our Tubs include waste and overflow assembly as well as the faucet with hand held shower head.



Waste & Overflow

Large easy grip handle that requires only a 1/4 turn to release the water, in addition the overflow set high in the tub for maximum soaking depth.



Door Drain

A critical part & UPC code require ; water that may leak around the door seal will be captured in the Secondary Drain. The excess water will then be directed to the bath drain.



Easy Grip Door Lock

Ergonomically shaped design and strategic placement allows you to lower and raise the latch with ease.



Built-in Seat

The comfort seat is 17" high. Follow ADA (American Disability Act) standard height in our bathtubs. Allow ease of getting up and to sit down. Anti slip



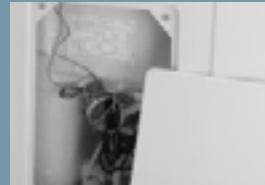
Low Threshold

Allow easy and safely enter and exit the tub without discomfort.



Angled Grab Bar

Providing you the ease of sitting or standing with the least amount of effort.



Access Panels

Cosmetically perfect and also provides easier installation and service.



Extension Panel

Our tub has the ability to extend to a perfect fit, allowing standard and custom installation.

BUILT WITH HIGHEST STANDARD

Our tubs are made with beautiful finish and lifetime of worry-free use



Tile Flange

Prevents water from dripping off the deck by creating a water tight seal along three sides of walls.



Motor Placement

Motor mount platform is located under each tub and behind the access panel for ease of service and maintenance.



Adjustable legs

Adjustable leveling legs: New design 6 adjustable legs under the tub to provide stability of the tub. Fast & Easy leveling with only one hand.



Durable Frame

Durable Frame: Our tub use high quality stainless steel to ensure durability and long lasting with Life Time Guaranty



Gel Coat/Fiber Glass Certified Shell

Three premium gel-coated. 100% Hand spray fiberglass to prevent air pockets from forming insuring greater durability .



True 2 inch fast flow drain

Allow to drain the tub in 80 seconds.



Door & Door seal

Intelligent design & constructed. NO leaks ever, life time guaranty.



Controls

Pneumatic push control or electronic console panel with touch keypad.

Systems Choose the right fit for you and your family



AIR MASSAGE

This system features 20 individual air jets placed around the tub. These jets send air bubbles cling to the skin to promote circulation. An added benefit with air-jets is that bath salts and oils can be used.



SYSTEM INCLUDES

- Twenty (20) brass chrome air jets
- 110V-120V. Standard Plug-In, 1hp Air Pump (UL approval)
- Pneumatic push control in chrome

HYDRO MASSAGE

6 or 10 Jets provide a more vigorous, focused massage as water sprays out of the jets which are strategically placed throughout your tub to hit specific areas such as your neck, shoulders, back, arms, hips, legs and feet.



SYSTEM INCLUDES

- 6 or 10 brass chrome power water jets
- 110V-120V. Standard Plug-In, 1hp Air Pump (UL certified)
- Pneumatic push control or in chrome

CHROMATHERAPY

It is used to balance each person's physical, spiritual, mental and emotional energy. With our LED lighting designs you can create an ideal relax environment.



SYSTEM INCLUDES

- 9-LED lights strategically placed in tub
- Combination of 7 colors
- Choices of 21 blended colors to help you release stress



AROMATHERAPY

Use it for improved physical, mental, and emotional well-being of our central nervous system. Just a little drop and combine warm bath, which will rejuvenate both body and mind.



Electronic console unit with touch keypad controls

- Hydro
- Air massage
- Ozone
- Chromathrapy
- FM Radio volume and turns
- LED screen shows water temperatures
- Memory for presets



OZONE SANITIZER

Created from the oxygen we breathe, Ozone gas is a powerful sanitizer that is known to kill disease-causing microorganisms. This Ozone gas then flows through the air system piping and out through the air jets disinfecting the system while you bath.



IN-LINE HEATER

Designed for the pressure side of the bathtub pump and have a built in internal pressure switch to control heater operation. Important: bathtub heaters will only maintain the water temperature that is put into the tub. They will not increase the water temperature.



SYSTEM INCLUDES

- 104° preset thermostat
- Intelligent High Limit Switch
- Heater "On" Light

NEW & EXCLUSIVE MICRO BUBBLES

Newest Technology from Japan installed in our Walk-in Bath tubs; an environmentally friendly technology. It removes dirt, odors, and excess oil; has a massaging effect, and oxygenates the skin. No scrubbing, rubbing, shampoos or chemicals are used. Dry and rough skin can also be improved due to the miniaturization and the removal of the dead keratin with the Micro Nano Bubble.

The Amazing Power of Micro Bubbles!!

Micro Bubbles are 1/1000 the size of ordinary water bubbles, so they are small enough to get into the pores of the skin. They contain negative ions which bond with dirt (which has positive ions). And as all bubbles do, they rise up, taking all impurities with them out of the pores.

Benefits of Negative Ions

Micro Bubbles also produce 50,000-120,000 negative ions per cubic-centimeter (about the size of a pea), while waterfalls produce 5,000-10,000 per cm³. Negative ions are essential for our health and well being since they serve as air purifiers by killing bacteria and other harmful organisms; and are widely credited to enhance the immune system, speed recovery, promote relaxation, reduce stress and fatigue, and boost serotonin ("happy" neurotransmitters) levels in the bloodstream.

Skin Oxygenation

Improved skin oxygenation stimulates the healing process of damaged skin. Each Micro Bubble is under 20 microns and there are about 600,000 Micro Bubbles in a cubic-centimeter of water (about the size of a pea), delivering an amazing amount of oxygen to skin. The massaging effect caused by the popping bubbles also promotes blood circulation, bringing more oxygen to the skin from within as well.



Customize your walk-in tub to your unique needs



Details of our TUBS



We offer well fit design walk-in tub that empowers those in need with the dignity and independence of taking care of your own personal hygiene needs. *Ultimate in accessibility and pure comfort.*

All of our tubs comes with the following:

- High Quality Chrome Fixture
- Easy To Operate Drain Release
- No Leak Door Sealing System
- Slip Resistant Floor
- 17" Contoured Seating
- Safety Secondary Door Drain
- Removable Access Panels
- Safety Grab Bar
- Stainless Steel Flame
- Adjustable Height Legs
- Wall extension for 60" opening
- Optional Therapy Systems

CARE 2653

It is constructed of the highest grade fiberglass composites with a triple gel coat finish for beauty and durability. CARE 2653 is perfect for small bathrooms.

Tub Shell - High gloss triple gel coat finished

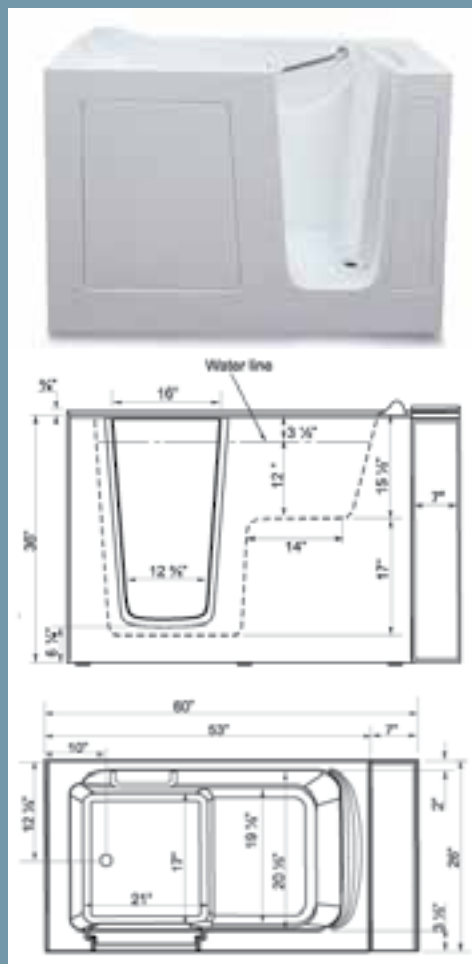
- High quality fiberglass material
- Heavy duty fiberglass reinforced
- Excellent color uniformity
- Durable gel coat surface
- Easy-to-clean high gloss finish

Available System / Parts

- Soaking • Hydro Massage • Air Massage • Dual Massage
- Chromatherapy system • Aromatherapy
- Faucets • Water In-line heater • Headrest Pillow • Ozone sterilizer

SPECIFICATIONS:

AVAILABLE COLORS	WHITE / BISCUIT		
DOOR SWING	INWARD.		
DOOR SIDE	LEFT OR RIGHT	DOOR OPENING	16"
SEAT (W)X(H)inch	20.5X17X14	SEAT CONTOURED	YES
SAFETY GRAB BAR	YES		
NON SLIP FLOOR	YES		
FAUCET DECK	YES		
WALL EXTENSION KIT TO FIT IN STANDARD 60" OPENING			
WATER CAPACITY	45 GAL		
DIMENSIONS (inch)	26(W)X53(L)X36(H)	APPROX. SHIPPING WEIGHT	225 Lb



CARE 3048

It is constructed of the high grade fiberglass composites with triple gel coat finish for beauty and durability.

Tub Shell - High gloss triple gel coat finished

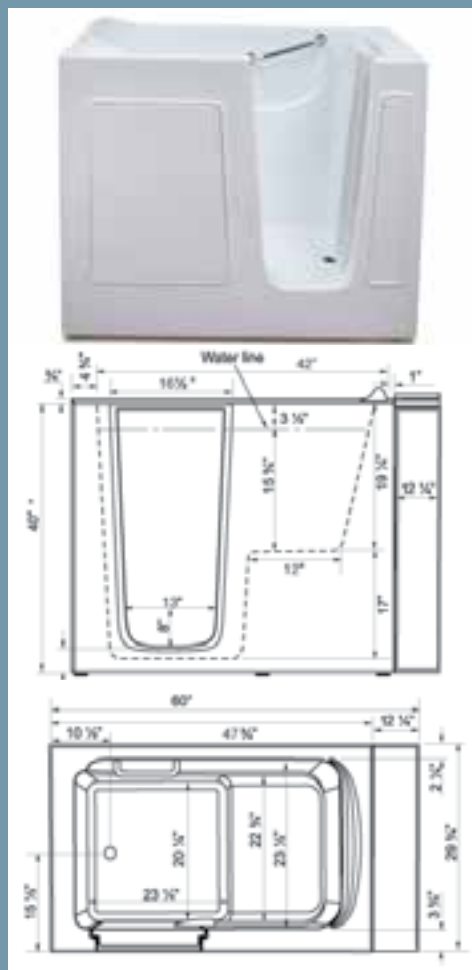
- High quality fiberglass material
- Excellent color uniformity
- Durable gel coat surface
- Easy-to-clean high gloss finish

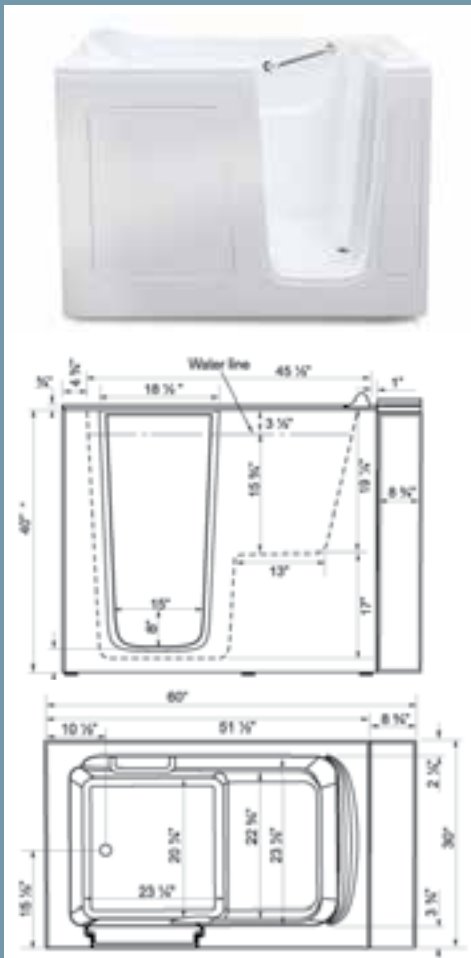
Available System / Parts

- Soaking • Hydro Massage • Air Massage • Dual Massage
- Chromatherapy system • Aromatherapy
- Faucets • Water In-line heater • Headrest Pillow • Ozone sterilizer

SPECIFICATIONS:

AVAILABLE COLORS	WHITE / BISCUIT		
DOOR SWING	INWARD.		
DOOR SIDE	LEFT OR RIGHT	DOOR OPENING	16"
SEAT (W)X(H)X(D)inch	23X17X13	SEAT CONTOURED	YES
SAFETY GRAB BAR	YES		
NON SLIP FLOOR	YES		
FAUCET DECK	YES		
WALL EXTENSION KIT TO FIT IN STANDARD 60" OPENING			
WATER CAPACITY	57 GAL		
DIMENSIONS (inch)	29(W)X48(L)X39(H)		





CARE 3052

It is constructed of the highest grade fiberglass composites with a triple gel coat finish for beauty and durability.

Tub Shell - High gloss triple gel coat finished

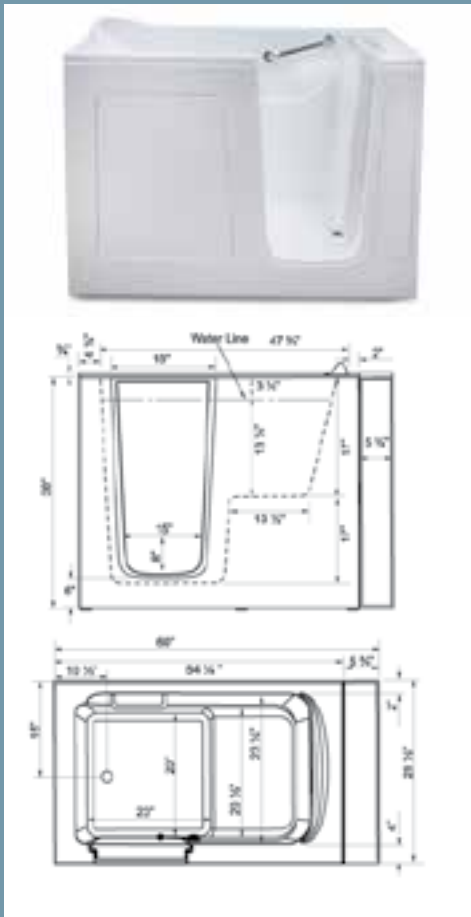
- High quality fiberglass material
- Excellent color uniformity
- Durable gel coat surface
- Easy-to-clean high gloss finish

Available System / Parts

- Soaking • Hydro Massage • Air Massage • Dual Massage
- Chromatherapy system • Aromatherapy
- Faucets • Water In-line heater • Headrest Pillow • Ozone sterilizer

SPECIFICATIONS:

AVAILABLE COLORS	WHITE / BISCUIT		
DOOR SWING	INWARD.		
DOOR SIDE	LEFT OR RIGHT	DOOR OPENING	18"
SEAT (W)X(H)X(D)inch	23X17X13.5	SEAT CONTOURED	YES
SAFETY GRAB BAR	YES		
NON SLIP FLOOR	YES		
FAUCET DECK	YES		
WALL EXTENSION KIT TO FIT IN STANDARD 60" OPENING			
WATER CAPACITY	65 GAL		
DIMENSIONS (inch)	30(W)X51.5(L)X40(H)		



CARE 3054

CARE 3054 is perfect for new construction and or retro fitting because of its industry standard size.

Tub Shell - High gloss triple gel coat finished

- High quality fiberglass material
- Excellent color uniformity
- Durable gel coat surface
- Easy-to-clean high gloss finish

Available System / Parts

- Soaking • Hydro Massage • Air Massage • Dual Massage
- Chromatherapy system • Aromatherapy
- Faucets • Water In-line heater • Headrest Pillow • Ozone sterilizer

SPECIFICATIONS:

AVAILABLE COLORS	WHITE / BISCUIT		
DOOR SWING	INWARD.		
DOOR SIDE	LEFT OR RIGHT	DOOR OPENING	18"
SEAT (W)X(H)X(D)inch	23X17X14	SEAT CONTOURED	YES
SAFETY GRAB BAR	YES		
NON SLIP FLOOR	YES		
FAUCET DECK	YES		
WALL EXTENSION KIT TO FIT IN STANDARD 60" OPENING			
WATER CAPACITY	57 GAL		
DIMENSIONS (inch)	30(W)X54(L)X38(H)		

CARE 3060

CARE 3060 is perfect for new construction and or retro fitting because of its industry standard.

Tub Shell - High gloss triple gel coat finished

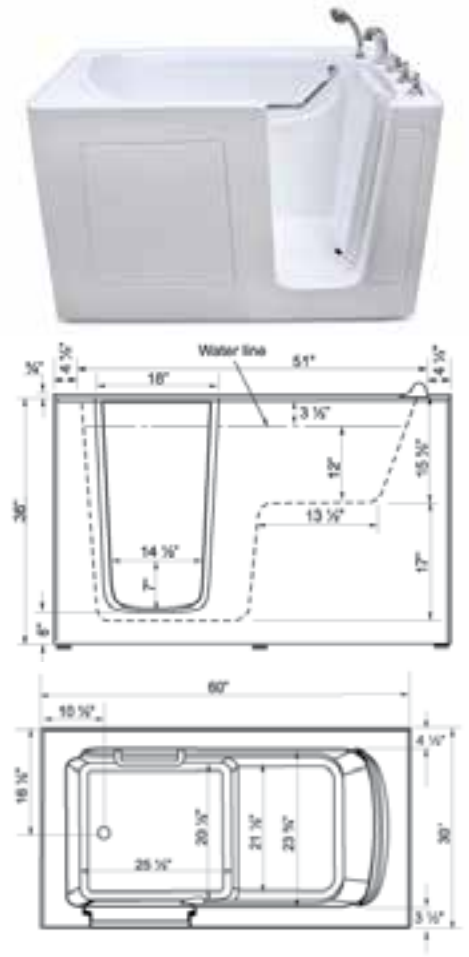
- High quality fiberglass material
- Excellent color uniformity
- Durable gel coat surface
- Easy-to-clean high gloss finish

Available System / Parts

- Soaking • Hydro Massage • Air Massage • Dual Massage
- Chromatherapy system • Aromatherapy
- Faucets • Water In-line heater • Headrest Pillow • Ozone sterilizer

SPECIFICATIONS:

AVAILABLE COLORS	WHITE		
DOOR SWING	INWARD.		
DOOR SIDE	LEFT OR RIGHT	DOOR OPENING	18"
SEAT (W)X(H)X(D)inch	20.5X17X13.5	SEAT CONTOURED	YES
SAFETY GRAB BAR	YES		
NON SLIP FLOOR	YES		
FAUCET DECK	YES		
WALL EXTENSION KIT TO FIT IN STANDARD 60" OPENING			
WALL TILES FLANGES	ALL SIDES		
WATER CAPACITY	75 GAL		
DIMENSIONS (inch)	30(W)X60(L)X36(H)		



CARE 3355

It is constructed of the highest grade fiberglass composites with a triple gel coat finish for beauty and durability. CARE 3355 has largest capacity.

Tub Shell - High gloss triple gel coat finished

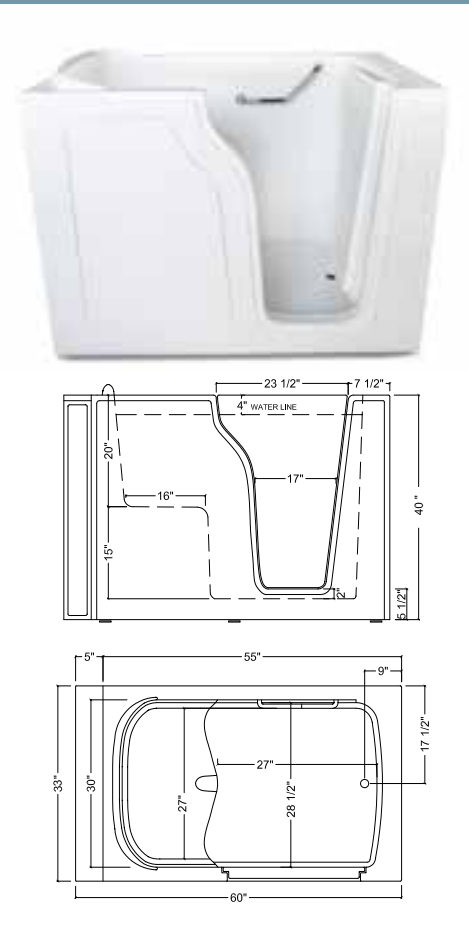
- High quality fiberglass material
- Excellent color uniformity
- Durable gel coat surface
- Easy-to-clean high gloss finish

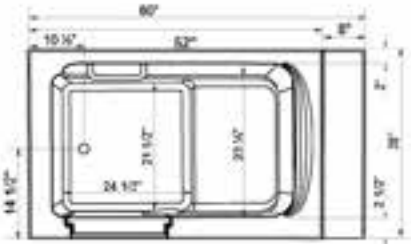
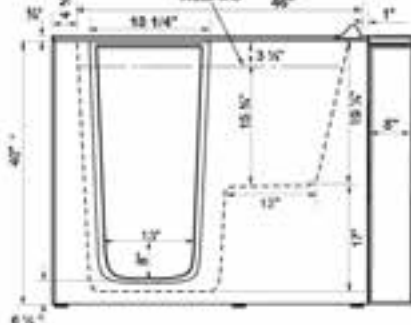
Available System / Parts

- Soaking • Hydro Massage • Air Massage • Dual Massage
- Chromatherapy system • Aromatherapy
- Faucets • Water In-line heater • Headrest Pillow • Ozone sterilizer

SPECIFICATIONS:

AVAILABLE COLORS	WHITE / BISCUIT		
DOOR SWING	INWARD.		
DOOR SIDE	LEFT OR RIGHT	DOOR OPENING	24"
SEAT (W)X(H)X(D)inch	30.5X17X15.5	SEAT CONTOURED	YES
SAFETY GRAB BAR	YES		
NON SLIP FLOOR	YES		
FAUCET DECK	YES		
WALL EXTENSION KIT TO FIT IN STANDARD 60" OPENING			
WATER CAPACITY	115 GAL		
DIMENSIONS (inch)	33(W)X55(L)X40(H)		





CARE 2852

Tub Shell - High gloss triple gel coat finished

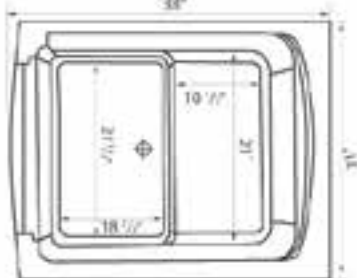
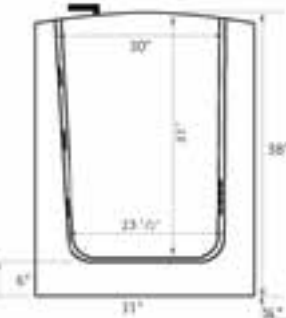
- High quality fiberglass material
- Excellent color uniformity
- Durable gel coat surface
- Easy-to-clean high gloss finish

Available System / Parts

- Soaking • Hydro Massage • Air Massage • Dual Massage
- Chromatherapy system • Aromatherapy
- Faucets • Water In-line heater • Headrest Pillow • Ozone sterilizer

SPECIFICATIONS:

AVAILABLE COLORS	WHITE / BISCUIT		
DOOR SWING	INWARD.		
DOOR SIDE	LEFT OR RIGHT	DOOR OPENING	16"
SEAT (W)X(H)X(D)inch	23.5X17X12	SEAT CONTOURED	YES
SAFETY GRAB BAR	YES		
NON SLIP FLOOR	YES		
FAUCET DECK	YES		
WALL EXTENSION KIT TO FIT IN STANDARD 60" OPENING			
WATER CAPACITY	45 GAL		
DIMENSIONS (inch)	28(W)X52(L)X40(H)		



LOVE 3138

Great for replacing existing shower stall or mobile home

Free Standing / Compact size

Tub Shell - High gloss triple gel coat finished

- High quality fiberglass material
- Excellent color uniformity
- Durable gel coat surface
- Easy-to-clean high gloss finish

Available System / Parts

- Soaking • Hydro Massage • Air Massage • Dual Massage
- Chromatherapy system • Aromatherapy
- Faucets • Water In-line heater • Headrest Pillow • Ozone sterilizer

SPECIFICATIONS:

AVAILABLE COLORS	WHITE		
DOOR SWING	OUTWARD.		
DOOR SIDE	LEFT OR RIGHT	DOOR OPENING	21"
SEAT (W)X(H)X(D)inch	24X17X10.5	SEAT CONTOURED	YES
SAFETY GRAB BAR	NO		
NON SLIP FLOOR	YES		
WALL EXTENSION KIT TO FIT IN STANDARD 60" OPENING			
WATER CAPACITY	45 GAL		
DIMENSIONS (inch)	33(W)X38(L)X38(H)		

LOVE 3052



This tub is ideal for both: step-in or wheelchair Slide-in access
Free Standing

Tub Shell - High gloss triple gel coat finished

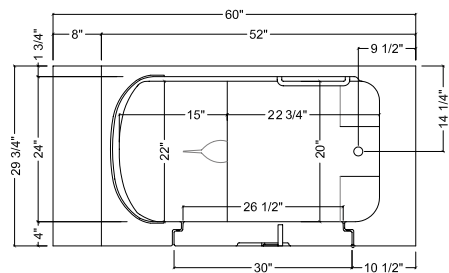
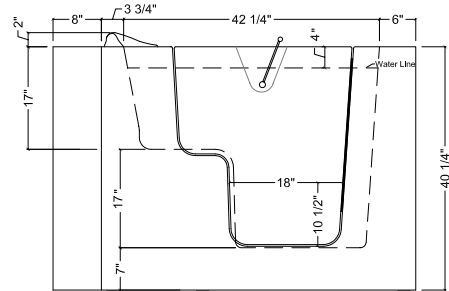
- High quality fiberglass material
- Excellent color uniformity
- Durable gel coat surface
- Easy-to-clean high gloss finish

Available System / Parts

- Soaking • Hydro Massage • Air Massage • Dual Massage
- Chromatherapy system • Aromatherapy
- Faucets • Water In-line heater • Headrest Pillow • Ozone sterilizer

SPECIFICATIONS:

AVAILABLE COLORS	WHITE / BISCUIT		
DOOR SWING	OUTWARD.		
DOOR SIDE	LEFT OR RIGHT	DOOR OPENING	28"
SEAT (W)X(H)X(D)inch	24X17X15.5	SEAT CONTOURED	YES
SAFETY GRAB BAR	YES		
NON SLIP FLOOR	YES		
FAUCET DECK	YES		
WALL EXTENSION KIT TO FIT IN STANDARD 60" OPENING			
WATER CAPACITY	70 GAL		
DIMENSIONS (inch)	30(W)X52(L)X40(H)		



LOVE 3252



Ideal for both: step-in or wheelchair Slide-in access
Free Standing *Bigger Is Better*

Tub Shell - High gloss triple gel coat finished

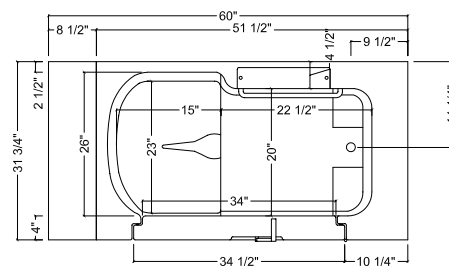
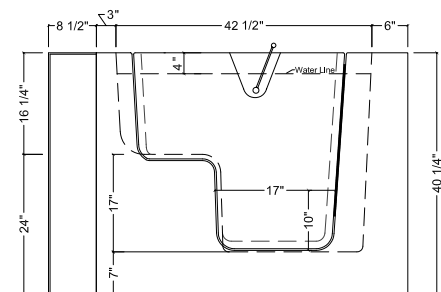
- High quality fiberglass material
- Excellent color uniformity
- Durable gel coat surface
- Easy-to-clean high gloss finish

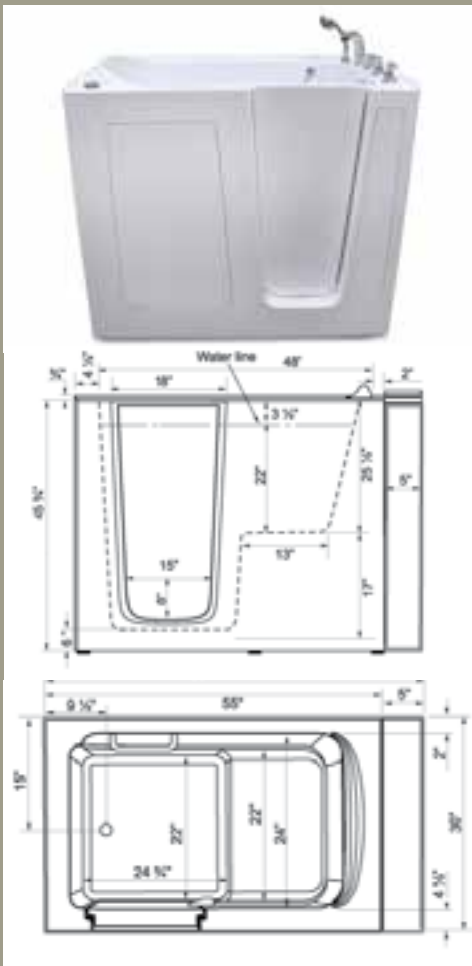
Available System / Parts

- Soaking • Hydro Massage • Air Massage • Dual Massage
- Chromatherapy system • Aromatherapy
- Faucets • Water In-line heater • Headrest Pillow • Ozone sterilizer

SPECIFICATIONS:

AVAILABLE COLORS	WHITE / BISCUIT		
DOOR SWING	OUTWARD.		
DOOR SIDE	LEFT OR RIGHT	DOOR OPENING	35"
SEAT (W)X(H)X(D)inch	26X17X15.5	SEAT CONTOURED	YES
SAFETY GRAB BAR	YES		
NON SLIP FLOOR	YES		
FAUCET DECK	YES		
WALL EXTENSION KIT TO FIT IN STANDARD 60" OPENING			
WATER CAPACITY	75 GAL		
DIMENSIONS (inch)	32(W)X52(L)X40(H)		





SAIN 3055

This tub is ideal for those who love *DEEP SOAKING*

Tub Shell - High gloss triple gel coat finished

- High quality fiberglass material
- Excellent color uniformity
- Durable gel coat surface
- Easy-to-clean high gloss finish

Available System / Parts

- Soaking • Hydro Massage • Air Massage • Dual Massage
- Chromatherapy system • Aromatherapy
- Faucets • Water In-line heater • Headrest Pillow • Ozone sterilizer

SPECIFICATIONS:

AVAILABLE COLORS	WHITE / BISCUIT		
DOOR SWING	INWARD		
DOOR SIDE	LEFT OR RIGHT	DOOR OPENING	18.5"
SEAT (W)X(H)X(D)inch	24.5X17X14	SEAT CONTOURED	YES
SAFETY GRAB BAR	YES		
NON SLIP FLOOR	YES		
FAUCET DECK	YES		
WALL EXTENSION KIT TO FIT IN STANDARD 60" OPENING			
WATER CAPACITY	105 GAL		
DIMENSIONS (inch)	30(W)X55(L)X46.5(H)		

Accessories



5 PCS PREMIUM FAUCET

- Thermostatic Bath Mixer
- Safety lock at desire water temperature
- Fast Fill
- Jewel Arched Solid Brass Spout
- 3/4" Valve, 3/4" Ports
- Ceramic Disc Cartridges
- Quick Connect Spout Installation
- NPS Connections
- 15 GPM (Average) @ 60 PSI

5 PCS ROMAN FAUCET

- Fast Fill
- Jewel Arched Solid Brass Spout
- 3/4" Valve, 3/4" Ports
- Ceramic Disc Cartridges
- Quick Connect Spout Installation
- NPS Connections
- 15 GPM (Average) @ 60 PSI

5 PCS FRENCH FAUCET

- Fast Fill
- Jewel Arched Solid Brass Spout
- 3/4" Valve, 3/4" Ports
- Ceramic Disc Cartridges
- Quick Connect Spout Installation
- NPS Connections
- 15 GPM (Average) @ 60 PSI



4 PCS ROMAN FAUCET

- Fast Fill
- Jewel Arched Solid Brass Spout
- 3/4" Valve, 3/4" Ports
- Ceramic Disc Cartridges
- Quick Connect Spout Installation
- NPS Connections
- 15 GPM (Average) @ 60 PSI



SHOWER CURTAIN & ROD

ADA compliant Shower Curtain can be designed to fit any installation. These products are used in hospitals and provide optimal safety for the bather



NECK REST PILLOW

- Comfortable and elegant looks
- Two Colors: Black or White



SLIDER BAR FOR HAND-HELD

- 16" adjustable height
- Swivel hand shower holder
- Soap tray



2" WASTE OVER FLOW KIT

The cable operated bath waste & overflow allows the drain to easily open and close with a simple one-eighth turn of the contoured handle.



LED LIGHTS ON FAUCET

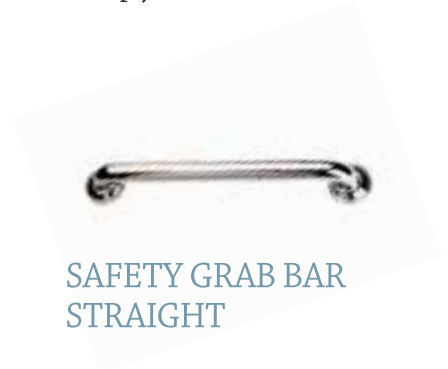
- 9-LED lights strategically placed under the all 5 pieces faucet
- Combination of 7 colors
- Choices of 21 blended colors to help you release stress



WALL MOUNT SAFETY GRAB BAR



SAFETY GRAB BAR ANGLE



SAFETY GRAB BAR STRAIGHT



END DECOR PANEL



EXTENSION PANEL



17940 Ajax Circle,
City of Industry CA 91748
Office: (626)581-3588
Fax: (626)587-4432
www.americantubs.com

